

# THE MANE EVENT

Nov 7, 2025  
Volume 25  
Issue 14

## CHRIST CHARACTER COMMUNITY

Official Newsletter of Grace Lutheran School

### A CELEBRATION OF GRACE

**Congratulations to the 2<sup>nd</sup> Grade class! Their families brought in the most silent auction items and they won a root beer float party!**

**Bid Here!!**



*Friday is the last day to bid on silent auctions!*

**BID ON CLASSROOM PROJECTS AND SO MUCH MORE!**

### CALENDAR

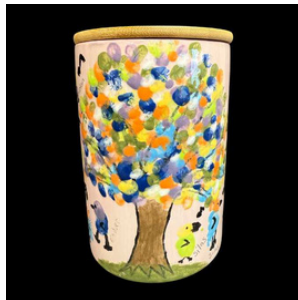
- Nov 11 - Picture Retakes (AM)
- Nov 21 - Chili Competition 2:30 pm
- Nov 26 - Early Dismissal 2 pm
- Nov 27 & 28 - No School
- Dec 18 - Christmas Musical 1:30 pm and 6:30 pm
- Dec 22-Jan 2 - Christmas Break

### MENU

- MON** 1: Chicken Patty / Bun  
2: Ham Sandwich
- TUE** 1: Sloppy Joe  
2: Summ Saus Sand
- WED** 1: Chicken Nuggets  
2: Turkey Sandwich
- THU** 1: Taco in a Bag  
2: Sunbutter / Jelly
- FRI** 1: Fish Sticks  
2: Muffin & Yogurt



Pre-Kindergarten Advent House and Hand-Painted Nativity Set



Kindergarten Ceramic Cookie Jar



1st Grade Tray with Original Artwork



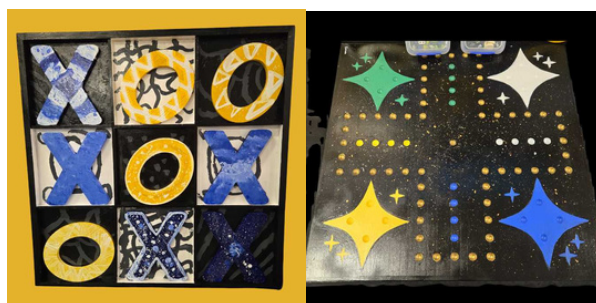
2nd Grade Hand-Painted Ceramic Platter



3rd Grade Book Bag and Favorite Books



4th and 5<sup>th</sup> Grade Themed Pavers



6th-8th Grade Handmade Board Games - Tic Tac Toe, Checkers, Chess, and Sorry!

CONNECT

[www.glsfargo.org](http://www.glsfargo.org)

1025 14th Ave S  
Fargo, ND 58103

701.232.7747  
Aftercare: 701.238.4975

Volunteer Hours

FACTS Portal  
GLC-ND

Jayne: [secretary@glfargo.org](mailto:secretary@glfargo.org)  
Susan: [principal@glfargo.org](mailto:principal@glfargo.org)

### PICTURE RETAKES

If your child was absent on picture day or you need retakes, Lifetouch will be here in the morning on November 11. **Please let your child's teacher know if your student needs retakes.**

Reorder forms are in the office or you can use the online code EVTKRV9Q3.

### THANK YOU, MIDDLE SCHOOL FAMILIES!

HUGE thank you to all families who provided desserts for our teachers during parent-teacher conferences!! Special thank you to Nate and Nicole Grobe for providing the entree both nights. A hot meal on a long day is a huge blessing for our teachers.

### SCHOOL DAY VOLUNTEERS

If you can assist with morning care, email Susan or Amy. If you can help with lunch, please use the [November/December sign up](#).

### PTL FUNDRAISER: HOLIDAY LIGHTS AT THE RRV FAIRGROUNDS

PTL has secured our school an opportunity to host two evenings at the Holiday Lights at the Red River Valley Fairgrounds. Our participation comes with a nice donation to the school for student, classroom, or family activities.

Save these dates to participate: Sunday, November 30 and Sunday, December 14. All volunteers must be 12 years or older. Younger children can help, but are not part of the official required volunteer count.

Hosting tasks include ticket scanning, ticket sales, and the cocoa stand. Shifts will be about 3 hours and 10 volunteers are needed for each shift.



### DRESS FOR THE WEATHER

Please be mindful of the weather and send appropriate winter weather gear, including gloves and hats on cold days and snowpants and boots when it snows. Students without appropriate gear do not get to enjoy the snow. All students go outside to -10 (PreK) and -15 (all others) with windchill. We are always looking for GLOVES and MITTENS to add to our stash of extras.