

# THE MANE EVENT

Oct 23, 2025  
Volume 25  
Issue 12

CHRIST CHARACTER COMMUNITY

Official Newsletter of Grace Lutheran School

## CALENDAR

Oct 30 & Nov 4 - Parent Teacher Conferences 4-8 pm  
Nov 7 - Early Dismissal 2 pm  
Nov 7 - A Celebration of Grace 5:15 PM  
Nov 11 - Picture Retakes (AM)  
Nov 26 - Early Dismissal 2 pm  
Nov 27 & 28 - No School

## PARENT TEACHER CONFERENCES

[Click here](#) to sign up for parent teacher conferences on Oct 30 or Nov 4. **Fourth through eighth grade families** please note the slight format change outlined in the sign up. The last day to sign up is Oct 29.

Ms. Johnson will not be available for conferences, as she will be traveling to England to lay her father to his eternal rest with Jesus. If you need to meet with Ms. Johnson, please reach out to her to schedule a meeting after her return on Nov. 20.

MAKE A JOYFUL NOISE TO THE LORD, ALL THE EARTH;  
BREAK FORTH INTO JOYOUS SONG AND SING PRAISES! PSALM 98:4

## A CELEBRATION OF GRACE FOR GRACE LUTHERAN SCHOOL

Friday, November 7, 2025  
5:30 PM

Sanctuary Events Center  
670 4th Ave N, Fargo



Social hour, 3-course dinner, program,  
and live and silent auctions.  
Tickets via QR or at [www.glsfargo.org](http://www.glsfargo.org)



## MENU

- MON** 1: Macaroni Hotdish  
2: Turkey Sandwich
- TUE** 1: Chicken Tidbits  
2: Ham Sandwich
- WED** 1: Tacos  
2: Sunbutter/Jelly
- THU** 1: Pizza  
2: Cold Cheese Sand.
- FRI** 1: Chili & Cheese Bread  
2: Muffin & Yogurt

## A CELEBRATION OF GRACE

A Celebration of Grace dinner and auction is just a few weeks away. Tickets are on sale until Nov. 3.

Silent auctions open online on Monday, November 3 at noon. All friends of Grace, near and far, are welcome to participate online. All links can be found at [www.glsfargo.org](http://www.glsfargo.org).

Stay tuned in the coming weeks for a sneak peak of your child's Classroom Project that you can bid on in the silent auction.

CONNECT

[www.glsfargo.org](http://www.glsfargo.org)

1025 14th Ave S  
Fargo, ND 58103

701.232.7747

Aftercare: 701.238.4975

Volunteer  
Hours

FACTS  
Portal  
GLC-ND

Jayne: [secretary@glfargo.org](mailto:secretary@glfargo.org)  
Susan: [principal@glfargo.org](mailto:principal@glfargo.org)

## TRUNK OR TREAT HELPERS

Thank you to all who have signed up to help pass out candy at the FOUR upcoming Trunk or Treats.

**Just a couple of [slots remain](#).** No set up, no tear down, just treats!

Trunk or Treats all take place on Saturday, October 25 or Wednesday, October 29. See the last page of this newsletter for specific times.

## NOV 7 AND 26 EARLY DISMISSAL

We have early dismissal on two days in November, Friday the 7<sup>th</sup> and Wednesday the 26<sup>th</sup>.

Aftercare is free from 2-3:30 pm on those days and continues at the usual rates from 3:30-6:15. All dismissal procedures will remain the same – aftercare kids will be sent to aftercare, home kids will be prepared to go home, **UNLESS you let your child's teacher know that you need something different.**

Good weather helps! Playground progress this week included a very careful digging process in preparation for concrete. Why so careful? There's 80 geothermal wells located underneath our playground!!



## SCHOOL DAY VOLUNTEERS

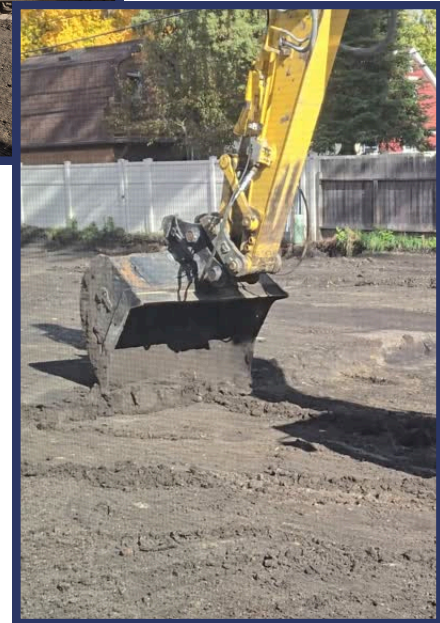
If you can assist with morning care, email Susan or Amy.

If you can help with lunch, please use the [October sign up](#) OR the [November/December sign up](#).

## HALLOWEEN PJ DAY

Students may bring \$1 to wear pajamas on Friday, October 31 (Halloween). Bring a stuffie for \$1 more!! All proceeds benefit the 7<sup>th</sup> and 8<sup>th</sup> grade class field trip to Minneapolis coming up in November. Costumes may not be worn to school on Halloween.

## PLAYGROUND PROGRESS





# TRUNK OR TREAT

**HALLOWEEN FUN FEST AT  
OUR REDEEMER LUTHERAN CHURCH  
SATURDAY, OCTOBER 25  
2-5 PM**

**TRUNK OR TREAT AT  
GRACE LUTHERAN CHURCH  
SATURDAY, OCTOBER 25  
6:30-8 PM**

**TRUNK OR TREAT AT  
IMMANUEL LUTHERAN CHURCH  
WEDNESDAY, OCTOBER 29  
5-6:30 PM**

**TRUNK OR TREAT AT  
BEAUTIFUL SAVIOR LUTHERAN CHURCH  
WEDNESDAY, OCTOBER 29  
6:30-8 PM**

Grace Lutheran School will participate in all of the above Trunk or Treat events. Volunteers are needed to pass out treats at each event.

No set up, no tear down, just treats.

Please [sign up here](#) if you are able help at any event.

All of these events qualify for volunteer hours.

