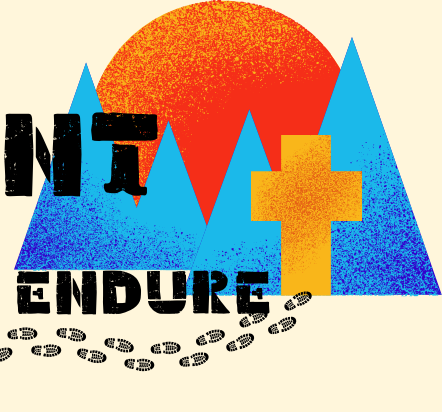




# THE MANE EVENT

CHRIST CHARACTER COMMUNITY

Official Newsletter of Grace Lutheran School  
February 7, 2025 Volume 24, Issue 24

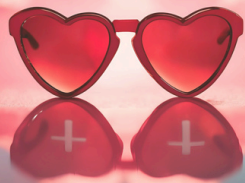


## GIVING HEARTS DAY

Grace Lutheran School is participating in it's 11th Giving Hearts Day on Thursday, February 13th. Our goal is to raise \$45,000 and we have a generous \$3000 match from DRI.



## Fix Your Eyes on Jesus



Grace Lutheran School:  
keeping eyes fixed on  
Jesus since 1948.

Join us on February 13 for  
Giving Hearts Day!



Early giving is open now  
at [www.glsfargo.org](http://www.glsfargo.org)



**GIVING  
HEARTS  
DAY**

## PARENT TEACHER CONFERENCES FEB 11 & 13

Parent-Teacher Conferences take place on February 11 and 13. Please click on your child's classroom(s) below and sign up for a time to meet with your student's teachers. **The sign ups close at midnight on Monday, February 10.**

[Pre-Kindergarten](#)

[Grade 3](#)

[Kindergarten](#)

[Grade 4 and 5](#)

[Grade 1](#)

[Grades 6, 7, and 8](#)

[Grade 2](#)

## PENNY WARS RESULTS

Congratulations to the 6th Grade class on winning the Penny Wars (AGAIN)! This class has won all NLSW coin competitions in recent years. We applaud our students' competitive spirit and their enthusiasm for helping the Emergency Food Pantry, the REAL winner in all of this.

Grace Lutheran School students will be donating **\$917.86** to the Emergency Food Pantry to help people in our community affected by food insecurity.

## CONNECT



Grace  
Lutheran School

[www.glsfargo.org](http://www.glsfargo.org)

1025 14th Ave S  
Fargo, ND 58103

701.232.7747

Questions: [secretary@glfargo.org](mailto:secretary@glfargo.org)

Principal: [principal@glfargo.org](mailto:principal@glfargo.org)

Aftercare: 701.238.4975



Volunteer  
Hours

## CALENDAR

FFeb 11 & 13 - PT

Conferences

Feb 13 - Giving Hearts  
Day

Feb 14 & 17 - No School

Mar 5 - Ash Wednesday

Mar 20-21 - No School

## LUNCH MENU

**MON** 1: Chicken Taco  
2: Ham Sandwich

**TUES** 1: Tater Tot Hotdish  
2: Muffin & Yogurt

**WED** 1: Chicken Tidbits  
2: Sunbutter/Jelly

**THURS** 1: Hot Ham & Cheese  
2: Pizza Munchable

**FRI** NO SCHOOL

## PIANO PLAYERS AT CHAPEL

Mrs. Uhlhorn's piano students return in February with more pre-chapel piano music.

February 19th - Blake G	March 26th - Eli J (5th)
February 26th - Langston W-C	April 2nd - Noah S
March 12th - Ava J	April 9th - Ian Z
March 19th - Mya N	April 16th - Elijah N

## APPROPRIATE WINTER GEAR REQUIRED

GLS started this winter with lots of spare hats and mittens but that number has dwindled to just a few. If you have any of our spares, please return them. If you have extras, please add them to our stash. The best solution, though, is to **make sure your child has all appropriate winter gear each day**. We only stay inside when "Real Feel" is -10 (PreK) or -15 (all others) or below..

## CHILDCARE SPENDING FOR TAXES

### How to Access Your 2024 Childcare Spending for Tax Purposes or FSAs

1. Sign in to your FACTS account.
2. From the home page, click on View Details in upper left box labelled Payment Plan and Billing. The Activity Details page will open.
3. Click on View Payment Summary.
4. Use the dropdown menu at the top to select 2024 and then review the information until you find your childcare spending, including Camp Grace. Spending is divided by school year, so you may have to add up charges from more than one area.
5. The tax ID is located under the school's address on the upper right corner of the page.

## RE-ENROLLMENT

Hard to believe, but we are already making plans for the 2025-2026 school year. We are working on our operating budget, curriculum decisions, teacher contracts, and financial aid budget. Re-enrollment affects all of these decisions.

## GLS MIDDLE SCHOOL HONOR ROLL

### 'A' Honor Roll

Ryan F  
Bryce H  
Tabby M  
Emma S  
Claire W  
Drew W



### 'B' Honor Roll

Kaidyn A  
Caleb H  
Maris H  
Ella J  
Eli J  
Kendal K  
Grace M  
Lilly S

## CAMP GRACE

All current GLS families not previously enrolled in Camp Grace may begin registration on February 12. Registration opens to the general public on March 17.

**Childcare spots are not secured until both the registration form and first week's fee are turned in.**

Questions, please talk to Amy Hirsch.

## CAMP GRACE DIRECTOR

Camp Grace is in search of a Director/Lead Teacher for this summer. If you know of someone who would be perfect for this job, please encourage them to apply.

The Camp Director works directly with the children at least 60% of the time and has separate time to oversee and organize the daily activities. See Amy Hirsch for full job description.

Grace Lutheran School utilizes automatic re-enrollment, meaning all students enrolled at Grace are automatically re-enrolled for the upcoming school year unless we receive **written notification** (letter or email to [principal@glsfargo.org](mailto:principal@glsfargo.org)) stating otherwise.

The registration fees for this fall will be charged in FACTS on February 18. The non-refundable fee is \$100 per child, maximum \$200 per family.

Therefore, since we are surrounded by so great a cloud of witnesses, let us also lay aside every weight, and sin which clings so closely, and let us run with endurance the race that is set before us, looking to Jesus, the founder and perfecter of our faith, who for the joy that was set before him endured the cross, despising the shame, and is seated at the right hand of the throne of God.  
Hebrews 12:1-2

