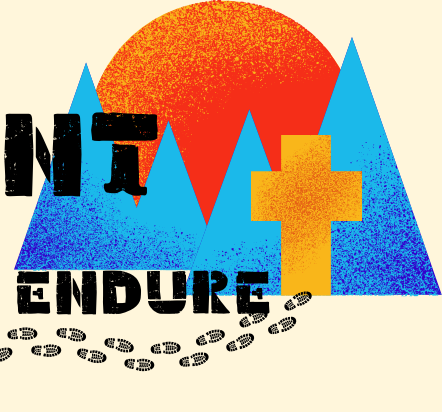




# THE MANE EVENT

CHRIST CHARACTER COMMUNITY

Official Newsletter of Grace Lutheran School  
January 31, 2025 Volume 24, Issue 23



## ALL SCHOOL PHOTO FEB 5



Each year, Grace students gather for a special all-school photo (see example to left). **All students should wear a WHITE shirt for this year's photo on Wednesday, February 5.**

## PARENT TEACHER CONFERENCES FEB 11 & 13

Parent-Teacher Conferences take place on February 11 and 13. Please click on your child's classroom(s) below and sign up for a time to meet with your student's teachers.

[Pre-Kindergarten](#)

[Grade 3](#)

[Kindergarten](#)

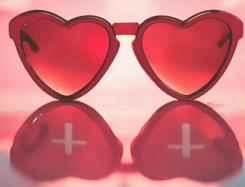
[Grade 4 and 5](#)

[Grade 1](#)

[Grades 6, 7, and 8](#)

[Grade 2](#)

## Fix Your Eyes on Jesus



Grace Lutheran School:  
keeping eyes fixed on  
Jesus since 1948.

Join us on February 13 for  
Giving Hearts Day!



Early giving is open now  
at [www.glsfargo.org](http://www.glsfargo.org)



**GIVING  
HEARTS  
DAY**

## GIVING HEARTS DAY

Grace Lutheran School is participating in it's 11th Giving Hearts Day on Thursday, February 13th. Our goal is to raise \$30,000 and we have a generous \$3000 match from [DRI](#).

In addition to taking an all-school photo, our students will also design a bookmark and help make thank you cards for our donors.



## CONNECT

[www.glsfargo.org](http://www.glsfargo.org)



1025 14th Ave S  
Fargo, ND 58103  
701.232.7747

Questions: [secretary@glstfargo.org](mailto:secretary@glstfargo.org)  
Principal: [principal@glstfargo.org](mailto:principal@glstfargo.org)  
Aftercare: 701.238.4975



[Volunteer  
Hours](#)

## CALENDAR

Feb 7 - Ski Trip 4th-8th

Feb 11 & 13 - PT

Conferences

Feb 13 - Giving Hearts  
Day

Feb 14 & 17 - No School

Mar 5 - Ash Wednesday

Mar 20-21 - No School

## LUNCH MENU

**MON** 1: Sub Sandwich  
2: Egg Salad Sand.

**TUES** 1: Sloppy Joes  
2: Ham Sandwich

**WED** 1: Fish Sticks  
2: Sunbutter/Jelly

**THURS** 1: Hamburger Gravy  
2: Turkey Sandwich

**FRI** 1: Hot Dogs  
2: Pizza Pocket

## 4TH-8TH SKI TRIP

The 4th-8th grade will go to Andes Tower Hills on Friday, February 7th for the annual ski trip.

Parents are welcome and should contact your child's teacher if you'd like to drive.

Students should arrive at school at 7:01 am for a 7:15 am departure. Students will return at approximately 4 pm.

## PIANO PLAYERS AT CHAPEL

Mrs. Uhlhorn's piano students return in February with more pre-chapel piano music.

February 5th - Grace M  
February 19th - Blake G  
February 26th - Langston W-C  
March 12th - Ava J  
March 19th - Mya N  
March 26th - Eli J (5th)  
April 2nd - Noah S  
April 9th - Ian Z  
April 16th - Elijah N

## DAN BODIN INSTALLATION

We welcome Rev. Daniel Bodin to Beautiful Savior Lutheran Church this Sunday, February 2 at 4 pm. All are invited to attend his installation and say hello to his family.

## BISON FOOTBALL PLAYERS AT THE WINTER CANDYLAND CARNIVAL!!



## CAMP GRACE

**Previous campers** have the first opportunity to register before February 12 with registration form and first week's fee. After February 12, registration opens to **current GLS families not previously enrolled** in Camp Grace and the **general public** can register starting March 17.

Camp Grace WILL reach capacity, so please register as early as possible. **Childcare spots are not secured until both the registration form and first week's fee are turned in.**

Questions, please talk to Amy Hirsch.

## RE-ENROLLMENT

Hard to believe, but we are already making plans for the 2025-2026 school year. We are working on our operating budget, curriculum decisions, teacher contracts, and financial aid budget. Re-enrollment affects all of these decisions.

Grace Lutheran School utilizes automatic re-enrollment, meaning all students enrolled at Grace are automatically re-enrolled for the upcoming school year unless we receive **written notification** (letter or email to [principal@glsfargo.org](mailto:principal@glsfargo.org)) stating otherwise.

The registration fees for this fall will be charged in FACTS on February 18. The non-refundable fee is \$100 per child, maximum \$200 per family.



Therefore, since we are surrounded by so great a cloud of witnesses, let us also lay aside every weight, and sin which clings so closely, and let us run with endurance the race that is set before us, looking to Jesus, the founder and perfecter of our faith, who for the joy that was set before him endured the cross, despising the shame, and is seated at the right hand of the throne of God.  
Hebrews 12:1-2



# National Lutheran Schools Week Recap

National Lutheran Schools Week was incredible! We spent many wonderful hours together in the Word, as well as playing, laughing, singing, dancing, and sharing God's love with others in our community.



# February Breakfast Menu



Monday	Tuesday	Wednesday	Thursday	Friday
3	4	5	6	7
Pancakes	Eggs and Toast	Breakfast Pizza	Burrito	Glazed Dunkin Stick
10	11	12	13	14
Waffles	Eggs and Toast	Breakfast Pizza	Mini Cinnamon Roll	NO SCHOOL
17	18	19	20	21
NO SCHOOL	Eggs and Toast	Pancake on a Stick	Eggs & Toast	Muffin Yogurt
24	25	26	27	28
Pancakes	Eggs and Toast	Egg/Cheese on Biscuit	Waffles and Sausage	Banana Bread

**MENU SUBJECT TO CHANGE**

# February Lunch Menu



Monday	Tuesday	Wednesday	Thursday	Friday
<b>3</b>	<b>4</b>	<b>5</b>	<b>6</b>	<b>7</b>
1. Subs 2. Egg Salad Sandwich  Vegetable Soup	1. Sloopy Joe 2. Ham Sandwich  Chips Baked Beans	1. Fish Sticks 2. Sunbutter/Jelly Sandwich  Butter Pasta Green Beans	1. Hamburger/Gravy 2. Turkey Sandwich Dinner Roll  Seasoned Cauliflower Mashed Potatoes	1. Hot Dogs 2. Pizza Pockets  Mac & Cheese
<b>10</b>	<b>11</b>	<b>12</b>	<b>13</b>	<b>14</b>
1. Chicken Tacos 2. Ham Sandwich  Rice Steamed Peas	1. Tater Tot Hotdish with Bread Slice 2. Muffin & Yogurt  Corn	1. Chicken Tidbits/Gravy and Dinner Roll 2. Sunbutter/Jelly Sandwich  Mashed Potatoes Glazed Carrots	1. Hot Ham & Cheese 2. Pizza Munchable  Chili	<b>NO SCHOOL</b>
<b>17</b>	<b>18</b>	<b>19</b>	<b>20</b>	<b>21</b>
<b>NO SCHOOL</b>	1. Pizza 2. Ham Sandwich  Cubed Potatoes	1. Spaghetti/Meat Sauce with Bread Stick 2. Sub Sandwich  Chips Corn	1. Chicken Patty 2. Tangy Summer Sausage Sandwich  Chicken Noodle Soup	1. Corn Dogs 2. Turkey Sandwich  Chips Baked Beans
<b>24</b>	<b>25</b>	<b>26</b>	<b>27</b>	<b>28</b>
1. Cheeseburger 2. Cold Cheese Sandwich  French Fries Baked Beans	1. Grilled Cheese 2. Ham Sandwich  Tomato Soup	1. Meatballs/Gravy with Dinner Roll 2. Turkey Sandwich  Mashed Potatoes Seasoned Cauliflower	1. Pancakes 2. Breakfast Pizza  Hash Browns Sausage Patty	1. Super Nachos with a Bread Stick 2. Sunbutter/Jelly Sandwich

**All lunches are served with one milk, fruit, and vegetables  
MENU SUBJECT TO CHANGE**