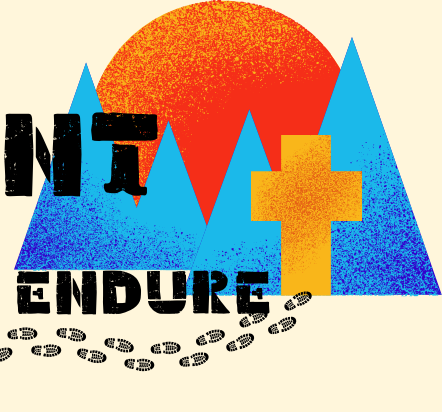




THE MANE EVENT

CHRIST CHARACTER COMMUNITY

Official Newsletter of Grace Lutheran School
October 11, 2024 Volume 24, Issue 8



NO SCHOOL THURS/FRI

There is no school on Thursday and Friday, October 17 and 18. The school office will also be closed. Electricity will be off at the building on Thursday and Friday. Please use email if you need to communicate with anyone during that time.

COUPON BOOKS OVERDUE

All money and unsold coupon books were due to the office on Wednesday, October 16. It is important that all unsold books and money are returned so that our profits are not reduced.



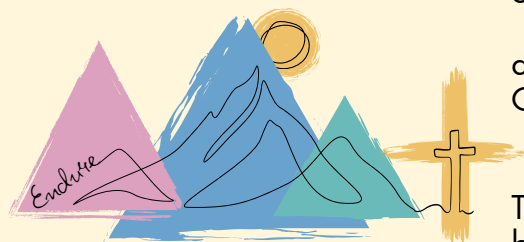
A CELEBRATION OF GRACE DINNER AND AUCTION

Grace Lutheran School's A Celebration of Grace Dinner and Auction is on **Friday, November 8th**.

All are invited to join us at this 21+ event for social hour, a 3-course dinner, program, and live and silent auctions at the Sanctuary Events Center.

Tickets are \$50 and available on our website: www.glsfargo.org.

The theme of this year's program is based on Hebrews 12:1-2: Endure. This is Grace's largest event of the year and all funds raised directly benefit students through curriculum upgrades and scholarships.



Our school families are invited to donate a gift basket for the silent auction. A letter with ideas was sent home in backpacks and is also on page 3 of this newsletter. Other ideas for silent auction donations include unused gift cards or other brand new items you no longer need, an experience reflecting a special skill set (sewing, woodworking etc), or partnering with another family for a larger basket. Families may also purchase a teacher's ticket so they may attend free of charge. Cash donations and/or an event sponsorship are also welcome (see page 4).

CONNECT

www.glsfargo.org



1025 14th Ave S
Fargo, ND 58103
701.232.7747

Questions: secretary@glfargo.org
Principal: principal@glfargo.org
Aftercare: 701.238.4975



Volunteer
Hours

CALENDAR

Oct 17 & 18 - No School,
Professional Development
Oct 21 - PTL Meeting 5 pm
Nov 8 - Dismissal 2 pm
Nov 8 - Celebration of Grace
at Sanctuary Events Center
5:30 pm

LUNCH MENU

MON 1: Grilled Cheese
2: Sunbutter/Jelly
TUES 1: Spaghetti
2: Turkey Sandwich
WED 1: Chicken Gravy
2: Muffin/Yog./Chs.
THURS 1: Pulled Pork
2: Ham Sandwich
FRI 1: Pancakes
2: Breakfast Pizza

MOVIE SCREENING SUNDAY AT GLS

There will be a screening of the film "Letter to the American Church" at Grace Lutheran School Sunday afternoon at 3pm. While we don't agree with everything in the movie because of our Lutheran theology, the movie does highlight the challenges our society is facing today. The viewing is not a political endorsement. A screening offers us a chance to discuss these challenges and our place as Christians in a secular world. Hebrews 3 encourages us to exhort one another so that we are not hardened by the deceitfulness of sin. Discussion surrounding the movie will be led by Pastor Michael Suelzle and DCM Jon Smelser from Grace Lutheran Church. The movie is geared toward adults and is suitable for high schoolers. Childcare is provided. Bring your own chair for maximum comfort.

PIANO STUDENTS PLAYING FOR CHAPEL

Under the direction of Rebekah Uhlhorn, Grace Lutheran School's piano teacher, the following students will perform musical selections before chapel:

October 23: Blake G
October 30: Grace M
November 6: Ava J
November 13: Mya N
November 20: Noah S
November 27: Ian Z
December 4: Grace M

All are welcome to join us for chapel at 8:40 am on Wednesday mornings.

PUMPKIN PATCH BUTTONS

Students received a green pin button at the pumpkin patch last week. If you plan to visit the pumpkin patch again, take the button and show it for a discount on admission.



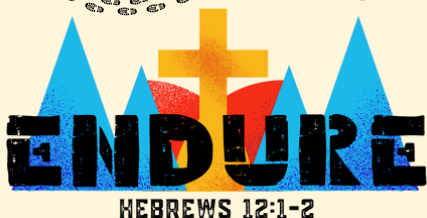
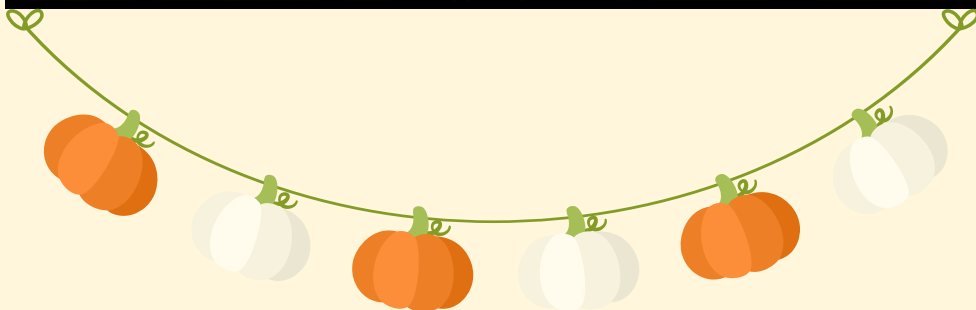
TRAILER NEEDED

Grace Lutheran School would like to participate in the Holiday Lights Parade downtown on December 7th. In order to do so, we need to borrow a trailer. If you have a trailer suitable for students to ride on, please let Amy Hirsch know if we can borrow it for the parade.

Pumpkins for Sale!
Free Delivery (to GLS)
Small (5 lbs) to Humungous (100+ lbs)

- Orange, Warty, White
- Pink, Green, Gray
- And Squash

10% of sales goes to GLS Growing in Grace Campaign
Text Claire: 701-540-1931



Therefore, since we are surrounded by so great a cloud of witnesses, let us also lay aside every weight, and sin which clings so closely, and let us run with endurance the race that is set before us, looking to Jesus, the founder and perfecter of our faith, who for the joy that was set before him endured the cross, despising the shame, and is seated at the right hand of the throne of God.
Hebrews 12:1-2

A Celebration of Grace

Basket Suggestions



A Celebration of Grace

Donation Information

Return with your basket.

Name: _____

Address: _____

Item(s) donated:

Value of donated items: **\$** _____

A Celebration of Grace for Grace Lutheran School

Sponsorship Opportunities

Event Date: November 8, 2024

**Commit to a sponsorship by October 25.

EVENT SPONSOR

\$3500

- 8 Tickets (One Table)
- Prominent display of company name and logo on all print and electronic media.
- Promotion on website and social media.
- High profile signage at event.
- Recognition during live program.

DINNER SPONSOR

\$2000

- 4 Event Tickets
- Company name and logo on all print and electronic media.
- Promotion on website and social media.
- Signage at event.
- Recognition during live program.

COFFEE SERVICE SPONSOR

\$500

- Company name and logo on all print and electronic media.
- Promotion on website and social media
- Signage at event
- Recognition during live program.

HOR D'OEUVRES SPONSOR

\$250

- Company name and logo on all print and electronic media.
- Promotion on website and social media
- Signage at event
- Recognition during live program.

PURCHASE A TABLE OF EIGHT \$400

Table for you and seven friends.

SPONSOR A TEACHER'S TICKET \$50

Our teachers work hard. Let's reward them with a celebratory night out.

Purchase a ticket for a teacher so they can attend free of charge.



Name: _____

Address: _____

Signature: _____

1025 14th Ave S, Fargo, ND 58103

www.glsfargo.org

amy.hirsch@glfargo.org

701-232-7747



All gifts to Grace Lutheran School are tax deductible to the extent provided by law.