



The Mane Event

Official Newsletter of Grace Lutheran School
January 26, 2024 | Volume 23, Issue 24

NATIONAL LUTHERAN SCHOOLS WEEK
--SEE PAGE 3--

Work Day

A Work Day is scheduled for tomorrow, Saturday, January 27 from 9 am - 12 pm. This is a great opportunity for people who cannot volunteer during the week to complete some volunteer hours. Friends and family are welcome, too. Tasks for this work day include indoor maintenance and cleaning projects.

Are We Your Favorite Charity?



If so, give us a nomination for a chance to win \$50,000 from Gate City Bank on Giving Hearts Day! [Check it out!](#)

Congratulations, Miss Johnson!!

Please join us in congratulating Miss Clare Johnson, our 5th grade and middle school teacher, on the completion of her colloquy.

What is colloquy? To obtain a colloquy from The Lutheran Church - Missouri Synod means Miss Johnson has taken additional college coursework in order to be a commissioned worker in the ministry of the LCMS. This coursework included extensive study of the Bible, Lutheran Doctrine, the history of theology, and courses specific to teaching from a biblical perspective.

Clare joins four other teachers on our staff who have taken the same courses to become commissioned teachers - Mrs. Susan Jahnke, Mrs. Carly Erdmann, Mrs. Carolyn Worrall, and Mrs. Sara Palmer.

Christ Character Community



I am the vine; you are the branches. Whoever abides in me and I in him, he it is that bears much fruit, for apart from me you can do nothing.
John 15:5

Calendar

- JANUARY 27 - WORK DAY 9 AM TO 12 PM
- FEBRUARY 8 - GIVING HEARTS DAY
- FEBRUARY 8 - GTIG PLEDGING DINNER 6 PM (RSVP)
- FEBRUARY 9 - 4TH-8TH SKI TRIP
- FEBRUARY 9 - GLS NIGHT AT FORCE
- FEBRUARY 10 - GTIG PLEDGING EVENT & CHILDREN'S PARTY 10:30 AM (RSVP)
- FEBRUARY 13 & 15 - PARENT TEACHERS CONFERENCES 4-8 PM

Lunch

- MONDAY 1: FRENCH TOAST
2: BREAKFAST PIZZA
- TUESDAY 1: HAMBURGER GRAVY/POTATOES
2: BANANA BREAD/YOGURT
- WEDNESDAY 1: GRILLED CHEESE SANDWICH
2: PIZZA MUNCHABLE
- THURSDAY 1: BAKED CHICKEN
2: HAM SANDWICH
- FRIDAY 1: SPAGHETTI/MEAT SAUCE
2: COLD CHEESE SANDWICH

Grace Lutheran School

www.glsfargo.org
1025 14th Avenue South
Fargo, ND 58103
701.232.7747

Questions: secretary@glfargo.org
Principal: principal@glfargo.org
Aftercare: 701.238.4975



Grace Lutheran School is owned and operated by the [Red River Lutheran School Association](#) and a ministry of [The Lutheran Church - Missouri Synod](#).

[Report Scholarship](#)
[Volunteer Hours](#)





Grace Lutheran School offers summer childcare called Camp Grace. Camp Grace is full- and half-day childcare for children 4-12 years old.

Previous campers have the first option to register between now and February 15. Applications for previous campers went out in today's mail. Any Grace school family new to Camp Grace can register starting February 16. Information is available on the website and the registration form will be available on February 15. New families from the community may register starting March 15.

Camp Grace WILL fill to capacity, so register early to guarantee your summer childcare.

Automatic Re-Enrollment

Grace Lutheran School uses automatic re-enrollment to simplify the rollover process from one school year to the next.

Here is the policy as outlined on page 8 of the [Family Handbook](#):

Re-enrollment occurs automatically each year in February. Each family is charged \$100 per student (capped at \$200 per family) through their FACTS account. Families choosing not to re-enroll must notify the school office by the published date to avoid the charge.

Notification of transfer (Pre-K through 7th) must be received by Friday, February 16. Registration fees will be charged in FACTS on/after Tuesday, February 20. The registration fee is non-refundable.



You are Invited

Grace Lutheran School is nearing the end of a capital improvement campaign that provides extensive remodeling and upgrades to the school. The campaign is called Growing Together in Grace.

All families will receive an invitation to our pledging events on February 8 and 10.

We will have some informational packets available in the office if you have interest in learning more about this project.

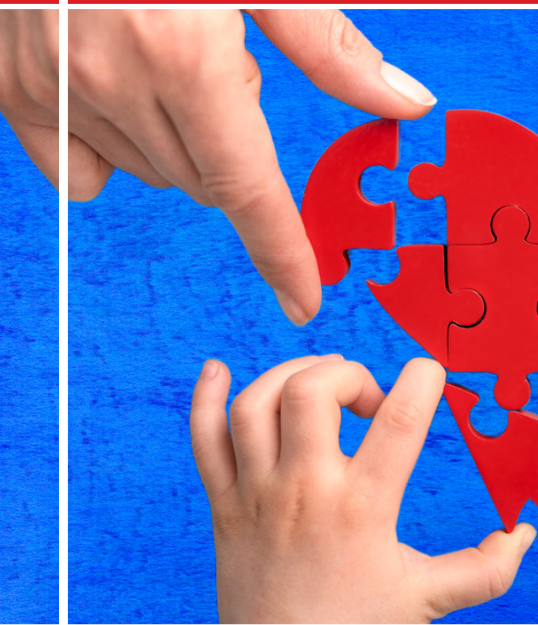
How to Access Your 2023 Childcare Spending for Tax Purposes or FSAs

1. Sign in to your FACTS account.
2. From the home page, click on View Details in upper left box labelled Payment Plan and Billing. The Activity Details page will open.
3. Click on View Payment Summary.
4. Use the dropdown menu at the top to select 2023 and then review the information until you find your childcare spending, including Camp Grace. Spending is divided by school year, so you may have to add up charges from more than one area.
5. The tax ID is located under the school's address on the upper right corner of the page.

National Lutheran Schools Week

We had a fabulous week celebrating our identity as a Lutheran school! Check out the fun!





Connected in CHRIST
With Hearts For CHRISTIAN Education



Giving Hearts Day

with

Grace Lutheran School

February 8, 2024



- Scan the QR
- Give at www.glsfargo.org
- Or give at www.givingheartsday.org
- Mail gifts dated 2/8/24 to
1025 14th Ave S, Fargo, ND 58103

FEBRUARY

Lunch Menu

Monday

Tuesday

Wednesday

Thursday

Friday

<p>All lunches include milk, vegetables, and fruit.</p>			<p>1 1: Baked Chicken 2: Ham Sandwich Mashed Potatoes Green Beans Dinner Roll</p>	<p>2 1: Spaghetti & Meat Sauce 2: Cold Cheese Sandwich Break Stix Corn</p>
<p>5 1: Chicken Patty/Bun 2: Ham Sandwich Vegetable Soup</p>	<p>6 1: Chicken Tidbits with Gravy 2: Sunbutter/Jelly Mashed Potatoes Green Beans Bread Slice</p>	<p>7 1: Cheeseburger 2: Turkey Sandwich French Fries Baked Beans</p>	<p>8 1: Lasagna Roll Up 2: Muffin & Yogurt Garlic Bread</p>	<p>9 ONE OPTION ONLY: Hot dogs Chips</p>
<p>12 1: Sub Sandwich 2: Egg Salad Sandwich Chicken Noodle Soup</p>	<p>13 1: French Bread Pizza w/ Maranara 2: Ham Sandwich Chips & Salsa</p>	<p>14 1: Taco 2: Sunbutter/Jelly Bread Stick</p>	<p>15 1: Pulled Pork/Bun 2: Turkey Sandwich Baked Potato Cole Slaw Baked Beans</p>	<p>16 NO SCHOOL</p>
<p>19 NO SCHOOL</p>	<p>20 1: Fish Sticks 2: Banana Bread & Cheese Stick Peas/Carrots Buttered Pasta</p>	<p>21 1: Sloppy Joes 2: Ham Sandwich Chips</p>	<p>22 1: Chicken Taco 2: Turkey/Ham Sub Rice w/ Cinn & Sugar</p>	<p>23 1: Macaroni Hotdish 2: Turkey Sandwich Corn Bread Stick</p>
<p>26 1: Chicken Nuggets 2: Ham Sandwich Hashbrown Bread Slice</p>	<p>27 1: Grilled Cheese 2: Turkey Munchable Tomato Soup</p>	<p>28 1: Corn Dog 2: Sunbutter/Jelly Cubed Potatoes</p>	<p>29 1: Tater Tot Hotdish 2: Cold Cheese Sandwich Garlic Bread Corn</p>	

FEBRUARY

Breakfast Menu

Monday	Tuesday	Wednesday	Thursday	Friday
All breakfasts include milk, juice, and a fruit.			1 Eggs Cereal	2 Muffin & Cheese Stick Cereal
5 French Toast Cereal	6 Egg & Cheese Biscuit Cereal	7 Breakfast Pizza Cereal	8 Eggs Cereal	9 Banana Bread Cereal
12 Pancakes Cereal	13 Egg & Cheese Biscuit Cereal	14 Breakfast Pizza Cereal	15 Eggs Cereal	16 NO SCHOOL
19 NO SCHOOL	20 Egg & Cheese Biscuit Cereal	21 Breakfast Pizza Cereal	22 Eggs Cereal	23 Banana Bread Cereal
26 Pancakes Cereal	27 Egg & Cheese Biscuit Cereal	28 Breakfast Pizza Cereal	29 Eggs Cereal	