



The Mane Event

Official Newsletter of Grace Lutheran School
January 19, 2024 | Volume 23, Issue 23

CANCELLED

Beat the Parents Game Night Cancelled

National Lutheran Schools Week January 22-26

National Lutheran Schools Week is a very special week to celebrate our identity as a Lutheran School.

See page 3 of this newsletter for all the information!

Dress Up Days:

Monday - VBS or religious shirts, dress like your favorite Bible character

Tuesday - Class Colors

- | | |
|------------|-----------------------|
| PK - red | 3 - purple |
| K- pink | 4 - orange |
| 1 - blue | 5 - green |
| 2 - yellow | 6-8 - black and white |

Wednesday - Career Day

Thursday - Grace Gear (or blue and yellow)

Friday - PJ Day

Liftoff to Kindergarten

All current Pre-Kindergarten families are invited to "Liftoff to Kindergarten," an open house event to explore our kindergarten, ask questions, discover the differences between PreK and K, and learn more about the importance of Christian education. The event starts at 4:30 pm on Thursday, January 25.

Work Day

A Work Day is scheduled for Saturday, January 27 from 9 am - 12 pm. This is a great opportunity for people who cannot volunteer during the week to complete some volunteer hours. Friends and family are welcome, too. Tasks for this work day include indoor maintenance and cleaning projects.

Christ Character Community



I am the vine; you are the branches. Whoever abides in me and I in him, he it is that bears much fruit, for apart from me you can do nothing.
John 15:5

Calendar

JANUARY 22-26 - NATIONAL LUTHERAN SCHOOLS WEEK

JANUARY 25 - LIFTOFF TO KINDERGARTEN EVENT 4:30-6 PM

JANUARY 27 - WORK DAY 9 AM TO 12 PM

FEBRUARY 8 - GIVING HEARTS DAY

FEBRUARY 9 - 4TH-8TH SKI TRIP

FEBRUARY 9 - GLS NIGHT AT FORCE

FEBRUARY 13 & 15 - PARENT TEACHERS CONFERENCES 4-8 PM

Lunch

MONDAY 1: CORN DOG
2: TURKEY MUNCHABLE

TUESDAY 1: SLOPPY JOES
2: MUFFIN AND YOGURT

WEDNESDAY 1: CHICKEN TACO
2: PIZZA SUB

THURSDAY 1: MACARONI HOTDISH
2: TURKEY SANDWICH

FRIDAY 1: CHICKEN PATTY/BUN
2: HAM SANDWICH

Grace Lutheran School

www.glsfargo.org
1025 14th Avenue South
Fargo, ND 58103
701.232.7747

Questions: secretary@glfargo.org
Principal: principal@glfargo.org
Aftercare: 701.238.4975



Grace Lutheran School is owned and operated by the [Red River Lutheran School Association](#) and a ministry of [The Lutheran Church - Missouri Synod](#).

[Report Scholarship](#)
[Volunteer Hours](#)



Are We Your Favorite Charity?



If so, give us a nomination for a chance to win \$50,000 from Gate City Bank on Giving Hearts Day! [Check it out!](#)

Where is Miss Diana?

Some of you have noticed that Miss Diana is missing! She had an injury that required surgery and she will be out of the office for an extended period of time to recuperate.

In the meantime, Mrs. Hirsch, Miss Shelly, and various others will be filling in. Please be patient with meal and aftercare charges and any other requests from the office while we figure out how to run smoothly without our favorite secretary.

Automatic Re-Enrollment

Grace Lutheran School uses automatic re-enrollment to simplify the rollover process from one school year to the next.

Here is the policy as outlined on page 8 of the [Family Handbook](#):

Re-enrollment occurs automatically each year in February. Each family is charged \$100 per student (capped at \$200 per family) through their FACTS account. Families choosing not to re-enroll must notify the school office by the published date to avoid the charge.

Notification of transfer (Pre-K through 7th) must be received by Friday, February 16. Registration fees will be charged in FACTS on/after Tuesday, February 20. The registration fee is non-refundable.

Reporting Late Arrival or Absence

Just a reminder that it is school policy (pages 4 & 5 in the [Family Handbook](#)) that absences (including tardiness) must be reported to the school before 8:30 am. Report to the office via email or phone call (secretary@glsfargo.org or 701-232-7747) or contact your child's teacher directly. If your child has therapies during the school day, please remember to contact your child's therapy service as well.

How to Access Your 2023 Childcare Spending for Tax Purposes or FSAs

1. Sign in to your FACTS account.
2. From the home page, click on View Details in upper left box labelled Payment Plan and Billing. The Activity Details page will open.
3. Click on View Payment Summary.
4. Use the dropdown menu at the top to select 2023 and then review the information until you find your childcare spending, including Camp Grace. Spending is divided by school year, so you may have to add up charges from more than one area.
5. The tax ID is located under the school's address on the upper right corner of the page.



Grace Lutheran School offers summer childcare called Camp Grace. Camp Grace is full- and half-day childcare for children 4-12 years old. Registration is for the entire summer and **forms will be available shortly.**

Previous campers have the first option to register between now and February 15. Applications will be mailed to all previous campers next week. Any Grace school family new to Camp Grace can register starting February 16. New families from the community may register starting March 15.

Camp Grace WILL fill to capacity, so register early to guarantee your summer childcare.

National Lutheran Schools Week!

January 22-26

National Lutheran Schools Week is a special week to celebrate our identity as a Lutheran School. We will start each day with devotions together and participate in a variety of activities in service to Christ and to one another. Make sure to ask your child what they did with their chapel buddy!

MONDAY, JAN. 22

THEME: CONNECTED TO CHRIST

WEAR: VBS SHIRTS, RELIGIOUS SHIRTS, OR DRESS AS A BIBLE CHARACTER

DO: CARD MAKING FOR SHUT INS



TUESDAY, JAN. 23

THEME: CONNECTED TO THE FATHER AND HIS CREATIONS

WEAR: CLASS COLORS

PK - RED, K - PINK, 1 - BLUE, 2 - YELLOW, 3 - PURPLE, 4 - ORANGE,
5 - GREEN, 6-8 - BLACK AND WHITE

DO: CHAPEL BUDDY STORY TIME



WEDNESDAY, JAN. 24

THEME: CONNECTED TO HIS SPIRIT AND FRUITFUL GIFTS

WEAR: CAREER DAY

DO: FRUIT OF THE SPIRIT COLLABORATIVE PROJECT



THURSDAY, JAN. 25

THEME: CONNECTED TO THE CHURCH

WEAR: GRACE GEAR

DO: GRACE TEAM CRAFT & BINGO



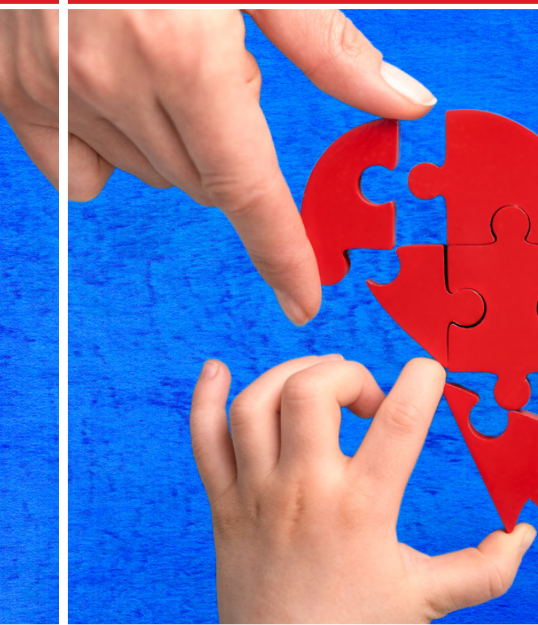
FRIDAY, JAN. 26

THEME: CONNECTED TO HIS COMMISSION

WEAR: PJ DAY

DO: MIDDLE SCHOOL TO ZION, ALEXANDRIA





Connected in CHRIST
With Hearts For CHRISTIAN Education



Giving Hearts Day

with

Grace Lutheran School

February 8, 2024



- Scan the QR
- Give at www.glsfargo.org
- Or give at www.givingheartsday.org
- Mail gifts dated 2/8/24 to
1025 14th Ave S, Fargo, ND 58103