



The Mane Event

Official Newsletter of Grace Lutheran School
January 12, 2024 | Volume 23, Issue 22

RSVP by Tomorrow!



[RSVP right now](#) for Beat the Parents Family Game Night on January 20th!! This event can only take place if enough people sign up. RSVPs must be in by tomorrow, January 13th.

Where is Miss Diana?

Some of you have noticed that Miss Diana is missing! She had an injury that required surgery and she will be out of the office for an extended period of time to recuperate.

In the meantime, Mrs. Hirsch, Miss Shelly, and various others will be filling in. Please be patient with meal and aftercare charges and any other requests from the office while we figure out how to run smoothly without our favorite secretary.

Monday Choir Rescheduled

Our staff members will be attending the funeral of Rev. Art Weidner Sr. on Monday (1/15). Choir has been rescheduled to Thursday, January 18th.

Reporting Late Arrival or Absence

Just a reminder that it is school policy (pages 4 & 5 in the [Family Handbook](#)) that absences (including tardiness) must be reported to the school before 8:30 am. Report to the office via email or phone call (secretary@glsfargo.org or 701-232-7747) or contact your child's teacher directly. If your child has therapies during the school day, please remember to contact your child's therapy service as well.

Christ Character Community



I am the vine; you are the branches. Whoever abides in me and I in him, he it is that bears much fruit, for apart from me you can do nothing. John 15:5

Calendar

- JANUARY 15 - PREVIEW DAY 8:30-12:30, OPEN HOUSE 4:30-6
- JANUARY 15 - NO CHOIR, MOVED TO JANUARY 18
- JANUARY 19 - TKD TESTING 4-5 PM
- JANUARY 20 - BEAT THE PARENTS GAME NIGHT AND MEAL 5-7 PM
- JANUARY 22-26 - NATIONAL LUTHERAN SCHOOLS WEEK
- JANUARY 27 - WORK DAY 9 AM TO 12 PM
- FEBRUARY 8 - GIVING HEARTS DAY
- FEBRUARY 9 - 4TH-8TH SKI TRIP

Lunch

- MONDAY 1: SUB SANDWICH
2: GRILLED CHICKEN SANDWICH
- TUESDAY 1: PULLED PORK
2: FISH STICKS
- WEDNESDAY 1: NACHOS
2: SUNBUTTER & JELLY
- THURSDAY 1: HAM SLICE & CHEESY POTATOES
2: GRILLED CHEESE
- FRIDAY 1: CHICKEN NUGGETS
2: HAM SANDWICH

Grace Lutheran School

www.glsfargo.org
1025 14th Avenue South
Fargo, ND 58103
701.232.7747

Questions: secretary@glsfargo.org
Principal: principal@glsfargo.org
Aftercare: 701.238.4975

Grace Lutheran School is owned and operated by the [Red River Lutheran School Association](#) and a ministry of [The Lutheran Church - Missouri Synod](#).



[Report Scholarship](#)
[Volunteer Hours](#)



Automatic Re-Enrollment

Grace Lutheran School uses automatic re-enrollment to simplify the rollover process from one school year to the next.

Here is the policy as outlined on page 8 of the [Family Handbook](#):

Re-enrollment occurs automatically each year in February. Each family is charged \$100 per student (capped at \$200 per family) through their FACTS account. Families choosing not to re-enroll must notify the school office by the published date to avoid the charge.

Notification of transfer (Pre-K through 7th) must be received by Friday, February 16. Registration fees will be charged in FACTS on/after Tuesday, February 20. The registration fee is non-refundable.

TKD Testing

Carter's Academy is promotion testing on Friday, January 19th. Watch your email for information from Carter about the test.

Open House Volunteers

We have three upcoming open house opportunities to grab a few volunteer hours. All open houses are from 4/4:15-6 pm and two adult volunteers are needed for each date, January 15, February 22, and March 4

Open House volunteers greet new families, help them register, pass out materials, and escort families to the appropriate classroom.

Email Amy Hirsch at amy.hirsch@glsfargo.org if you can assist and include the date(s) you can help. Spots will be filled on a first come, first served basis.

How to Access Your 2023 Childcare Spending for Tax Purposes or FSAs

1. Sign in to your FACTS account.
2. From the home page, click on View Details in upper left box labelled Payment Plan and Billing. The Activity Details page will open.
3. Click on View Payment Summary.
4. Use the dropdown menu at the top to select 2023 and then review the information until you find your childcare spending, including Camp Grace. Spending is divided by school year, so you may have to add up charges from more than one area.
5. The tax ID is located under the school's address on the upper right corner of the page.

Work Day

A Work Day is scheduled for Saturday, January 27 from 9 am - 12 pm. This is a great opportunity for people who cannot volunteer during the week to complete some volunteer hours. Friends and family are welcome, too.

Tasks for this work day include indoor maintenance and cleaning projects.

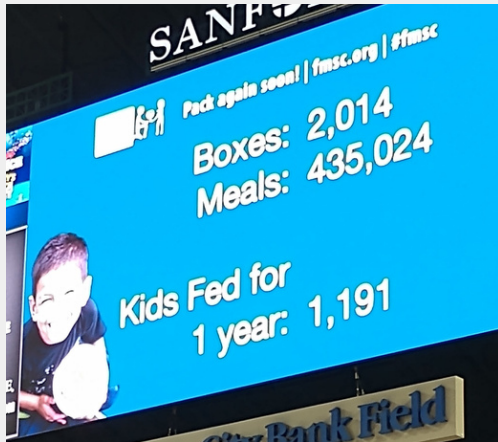


Grace Lutheran School offers summer childcare called Camp Grace. Camp Grace is full- and half-day childcare for children 4-12 years old. Registration is for the entire summer.

Previous campers have the first option to register between now and February 15. Applications will be mailed to all previous campers next week. Any Grace school family new to Camp Grace can register starting February 16. New families from the community may register starting March 15.

Camp Grace WILL fill to capacity, so register early to guarantee your summer childcare.

5th-8th FargoPack Event



On Thursday, our 5th through 8th grade students packed meals for Feed My Starving Children at the Fargodome.

We packed 435,024 meals alongside over 1000 others, enough food to feed 1191 kids one meal a day for one year.

Click [here](#) if you'd like to learn more about Feed My Starving Children or go [here](#) if you'd like to pack meals this weekend at the Fargodome.



National Lutheran Schools Week!

January 22-26

National Lutheran Schools Week is a special week to celebrate our identity as a Lutheran School. We will start each day with devotions together and participate in a variety of activities in service to Christ and to one another. Make sure to ask your child what they did with their chapel buddy!

MONDAY, JAN. 22

THEME: CONNECTED TO CHRIST

WEAR: VBS SHIRTS, RELIGIOUS SHIRTS, OR DRESS AS A BIBLE CHARACTER

DO: CARD MAKING FOR SHUT INS



TUESDAY, JAN. 23

THEME: CONNECTED TO THE FATHER AND HIS CREATIONS

WEAR: CLASS COLORS

PK - RED, K - PINK, 1 - BLUE, 2 - YELLOW, 3 - PURPLE, 4 - ORANGE,
5 - GREEN, 6-8 - BLACK AND WHITE

DO: CHAPEL BUDDY STORY TIME



WEDNESDAY, JAN. 24

THEME: CONNECTED TO HIS SPIRIT AND FRUITFUL GIFTS

WEAR: CAREER DAY

DO: FRUIT OF THE SPIRIT COLLABORATIVE PROJECT



THURSDAY, JAN. 25

THEME: CONNECTED TO THE CHURCH

WEAR: GRACE GEAR

DO: GRACE TEAM CRAFT



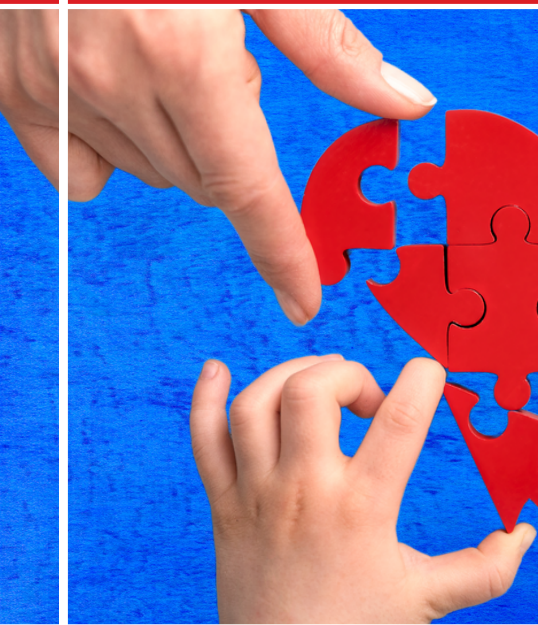
FRIDAY, JAN. 26

THEME: CONNECTED TO HIS COMMISSION

WEAR: PJ DAY

DO: ALL-SCHOOL BINGO





Connected in CHRIST
With Hearts For CHRISTIAN Education



Giving Hearts Day

with

Grace Lutheran School

February 8, 2024



- Scan the QR
- Give at www.glsfargo.org
- Or give at www.givingheartday.org
- Mail gifts dated 2/8/24 to
1025 14th Ave S, Fargo, ND 58103